



Plantrol's OMNIship processes and tracks any shipment efficiently, accesses carrier rates and services, prints the shipping documents you need and interfaces with your Order Entry, Finished Goods, and Billing systems. With an Interactive Website, your customers can visit your website and check the status of their shipment any time of day or night. Our partnership with Harvey Software's CPS® system guarantees the latest services and rate changes are included.

Supported Carriers

- UPS® Services (Domestic & International)
- FedEx Express® & FedEx Ground® Services
- United States Postal Service® Services
- Spee-Dee® Delivery Services
- General Carrier Services

Features

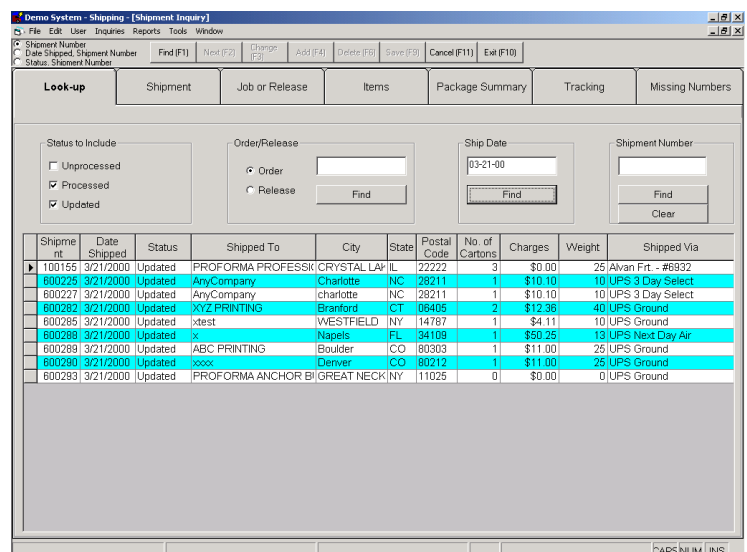
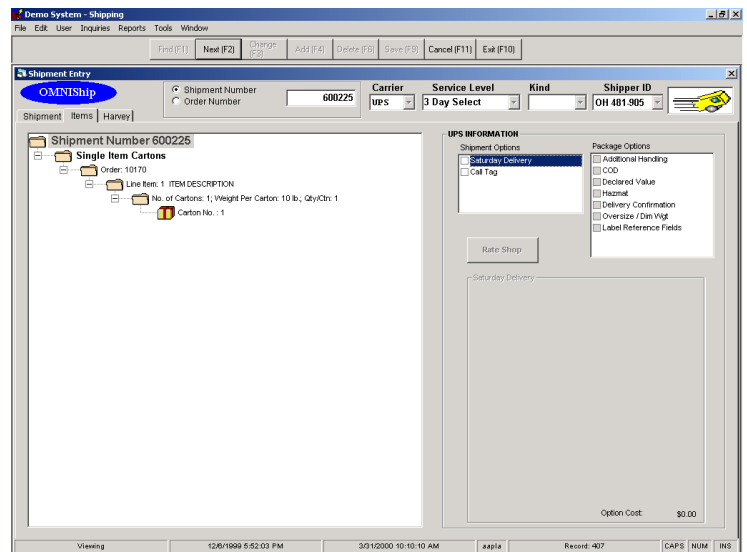
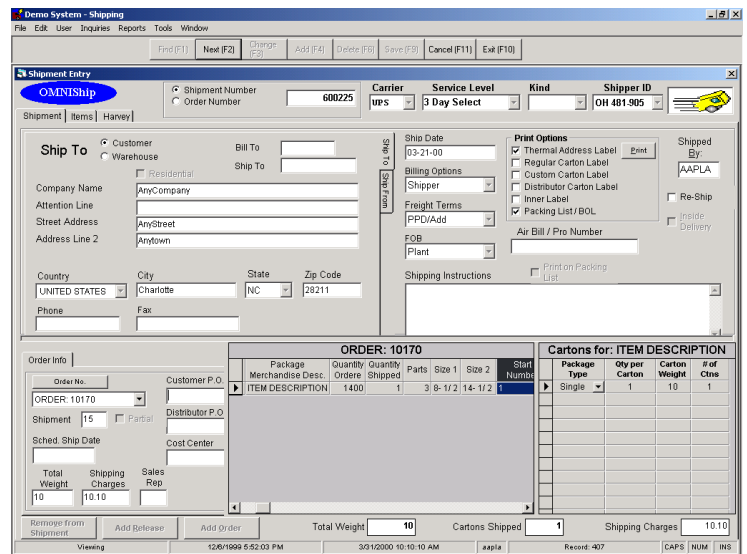
- One Solution for All Your Shipping Needs
- Rate Shopping
- Process Any Miscellaneous Shipment
- Easy Access to Jobs and Releases
- Combine Items in Cartons
- Capture Billing Information at Shipping Time
- Update Order or Release Status in Real Time
- Electronic Manifests for UPS, FedExGround, & USPS
- Print Labels in Advance or When Shipping
- International Shipping
- Daily Shipping Report
- Carrier Detail Reports
- Standard Bill of Lading / Packing List Form
- Thermal Bar Code Labels for UPS and FedExGround
- On-Line Tracking
- Automated Per Carton and Shipment Handling Charges
- On-Line Tracking
- Automatically Display Customer Routing Requests
- Export Documents
- Combine Orders, Releases, Misc. Items in One Shipment
- Automated Fuel Charges

Options

- Customized Labels, Packing Lists or Bills of Lading
- Interactive Web Pages
- Bar Code Reader
- Electronic Scale Interface
- Notice of Shipment
- LTL Rating

Standard Reports

- OMNIship Report of Daily Shipments
- Thermal Address Label
- UPS Labels
- Commercial Invoice for UPS International
- UPS Shipping Detail Report
- Fed Ex Ground Labels





Label Printing Screen

Job Number: 191238 **CREATING NEW SHIPMENT**

UPS: Ground

Label Type: Regular Dealer Custom Re-Ship

SHIP FROM: Plantrol Systems, 100 Bourne Street, Westfield, NY 14787

Name: ABC Printing Company, Attention: Mae Limwood, 111 Cascada Plaza, Canton, OH 44710

Cost Center: 620, Customer PO: NONE, Distributor PO: M8499940076

Parts: 1981 (3-3/4 x 7), IP-WORK TYPE-INCL TICKET

Shipment Quantity	Quantity Per Carton	Number of Labels	Starting Consecutive Number	Starting Carton #	Pad / Book Quantity	Inner Packaging Quantity
16500				1	0	500 Forms PKG

Demo System - Shipping

Update Orders: 09-12-02 09:12:02 09:10 AM

Current Record: 35 of 35

Records Done: 12

Records Skipped: 0

Shipping Update Complete

UPDATE QUIT

Demo System - Shipping

OMNIShip

Shipment Number: 600562

Carrier: UPS Service Level: Worldwide Express

Commercial Invoice Information

Sold To/Importer Information: Plantrol Systems, 123 Richard Avenue, Paris, FRANCE

Terms of Sale: SALE

Description	Units	Unit Price	Total
Printed Items	5000	1.000	5000.00
Total			5000.00

Demo System - Shipping

Shipment Inquiry

Shipment Transaction	Job b	Job or Release	Job b	Line Item	Seq	Shipment Package	Weight	Carton Quantity	Package Tracking Number	First Number	Last Number	Number of Missing	Dir to
600340	OE	192138	1	1	1	10	500	121237210310009393					
600340	OE	192138	1	1	2	10	500	121237210310009400					
600340	OE	192138	1	1	3	10	500	121237210310009419					
600340	OE	192138	1	1	4	10	500	121237210310009428					
600340	OE	192138	1	1	5	10	500	121237210310009437					
600340	OE	192138	1	1	7	15	15	121237210310009446					

Freight Calculator

Overall: Postal Code: 10019, # Packages: 10, Carton Weight: 45, Last Carton Weight: 15, Total Weight: 420

Carrier	Service Level	Estimated Cost
UPS	UPS Ground	153.85
FXG	FedEx Ground	168.34
UPS	UPS 3 day select	168.42
SAIA	SAIA	386.78
FEX	FedEx Express Saver	499.80
UPS	UPS 2nd day air	533.40
UPS	UPS 2nd day AM	579.60
FEX	FedEx 2nd day	596.40
UPS	UPS next day saver	996.98
UPS	UPS Next day air	1067.85
FEX	FedEx Standard Overnight	1213.80
FEX	FedEx Priority Overnight	1331.40
FEX	FedEx First Overnight	1436.40

Shippers: Service (FEX, FXG, UPS, PKUP, SAIA), Ship Time (1 Day, 2 Day, 3 Day, More than 3 Day)

Select All Rate Clear Exit