



Raw Material Inventory

Plantrol's Raw Material Inventory is an all-inclusive system that provides you with complete inventory tracking, item accountability, tag accountability, purchase order control, allocations, usage, purges, physical inventory processing - with or without bar codes, inquiry options, reports, and optional EDI (Electronic Data Interchange) and LIFO/FIFO reporting.

Standard Features

- Allows for Accountability by Individual Tag (roll, skid, carton, etc.)
- Compares Purchase Order Quantity, Receipt Quantity and Invoice Quantity
- Maintains Usage History by Job Number/Tag Number
- Supports 6 Inventory Types, Including Business Forms Rolls and Sheets, Commercial or Label Rolls and Sheets, and Inventory by Part Number
- Tracks Allocations by Item and Job
- Automated Physical Inventory Using Bar Code Scanners
- Easy Error Correction Procedures
- Complete Receipt History for LIFO/FIFO Valuation
- Waste and Waste Variance Tracking
- Predicts Impending Stock Outs
- Reduces Late Jobs Due to Inventory Shortage
- Supports Roll Slitting and Tinting
- Metric Capabilities
- Supports Pricing Units: MSI, MSF, CWT, M, each

Optional Features

- Electronic Data Interchange (EDI)
- LIFO/FIFO Reporting
- Automatic Updating of Work In Process Accounts in General Ledger
- Automatic Allocation from Order Planning
- Real Time Updating through Data Collection
- Automatic Creation of AP Vouchers

Item Accountability

Each item is tracked with up to 6 descriptors such as grade, weight, color, size, brand and finish. Information includes quantity on hand, quantity allocated, quantity on order, quantity used month-to-date, quantity used year-to-date, average monthly usage, reorder point, quantity received but not invoiced, weighted average price, price of last receipt, average weight per roll.

Available System Interfaces

- Order Planning
- Job Cost
- Cost Estimating
- Data Collection
- General Ledger
- Accounts Payable

Allocations & Usage

An automatic transfer from Order Planning updates allocations. Plantrol's system will predict stock outs, and when used with Plantrol's Data Collection, total press impressions are used to compute nominal usage. Usage is input from updated material requisitions or automatically through Data Collection. An electronic scale can be used to verify weights to actual and record warehouse tare waste.

Best Business Products - Raw Material Inventory - [Purchase Order Inquiry Specific Item]

File Edit Debug Mode User Maintenance Allocations Purchase Orders Usage EDI Processing Inquiries Reports End of Month Physical Inventory Tools Window

Company: 1

Grade: CB BLK PREM Wgt: 16.0 Color: WHITE Roll Width: 9-1/2

Desc: 9-1/2 WHITE 16.0 CB BLK PREM

Quantity On Hand	Quantity Allocated	Quantity On Order	Quantity Available	Average Usage	Reorder Point	Price	Extension
1072	6185	6495	1382	30888	1200	92.07	986.99

Date	Job P#	Job Number	Job Suf	PO Number	Item	Vendor	Quantity Ordered	Quantity Reserved	Balance
10/5/2001		1208677					0	81	-214
10/5/2001		1208646					0	33	-247
10/5/2001		1208702					0	34	-281
10/5/2001		1208705					0	36	-317
10/9/2001		1208698					0	34	-351
10/9/2001		1208704					0	34	-385
10/9/2001		1208703					0	140	-525
10/22/2001		1208560					0	217	-742
12/4/2001		0		7893	1	12200	1062	0	320
1/10/2002		0		1016	2	12200	1062	0	1382

Viewing 9/1/1999 7:59:37 PM 5/15/2002 6:19:37 PM sharo Record: 106 CAPS NUM INS

Best Business Products - Raw Material Inventory - [Purchase Order Entry]

File Edit Debug Mode User Maintenance Allocations Purchase Orders Usage EDI Processing Inquiries Reports End of Month Physical Inventory Tools Window

P.O. Number: 1130 Order Date: 10-07-02

Vendor: 115 Req. Dely: 10-09-02 MUST

Vendor Name: APPLETON PAPERS INC. Tax Exempt:

Ship to: 1000 Sold to: 1000 Bill to: 1000 Originator: Sue

Ship to: ABC Business Forms Ship Via: Appleton truck

100 Bourne Street Misc.:

Westfield, NY 14787 Original/Confirming/R'vised: 0

FOB: Mill/Warehouse: M Create PO File

Item	Tags Ordered	Quantity Ordered	Roll Width	Color	Weight	Grade	Price Quoted	Due Date	Unit of Measure	G/L Account	Unit Quoted	Vendor Part
1	6	2124	9-1/2	WHITE	16.0	CB BLK PREM	\$95.00	10-09-02	LB	325	100.0000	
2	4	1380	12-1/4	WHITE	16.0	CB BLK PREM	\$95.00	10-09-02	LB	325	100.0000	
3	6	3078	12-1/2	WHITE	100.0	TAG	\$32.50	10-09-02	LB	325	100.0000	
4	6	1500	9-1/4	WHITE	16.0	CBP	\$95.00	10-09-02	LB	325	100.0000	

Add Mode CAPS NUM INS

Best Business Products - Raw Material Inventory - [Purchase Order Inquiry By Grade]

File Edit Debug Mode User Maintenance Allocations Purchase Orders Usage EDI Processing Inquiries Reports End of Month Physical Inventory Tools Window

Company: 1

Grade: CB BLK PREM Wgt: 15.0 Color: WHITE Roll Width: 14-7/8

Desc: 14-7/8 WHITE 15.0 CB BLK PREM

P. O. Number	Item Number	Date Ordered	Quantity Ordered	Date Received	Tags Received	Quantity Received	Quantity Invoiced	Date Invoiced	Comp/Part	Ext. Billed
40317	4	06-29-95	1177	07-03-95	07-03-95	1190	1190	07-01-95	C	1152.28
44239	13	06-07-96	1177	06-07-96	06-07-96	3	1164	06-07-96	C	1143.75
44991	6	01-22-97	392	01-22-97	01-22-97	1	392	01-21-97	C	395.18
45524	3	06-18-97	392	06-18-97	06-18-97	1	393	06-18-97	C	395.16
46012	3	08-18-97	785	09-18-97	09-18-97	2	787	09-18-97	C	710.42
46356	5	01-19-98	1177	01-19-98	01-19-98	3	1160	01-16-98	C	1047.13
47989	5	01-05-99	394	01-05-99	01-05-99	1	397	01-05-99	C	358.37
48023	4	01-13-99	394	01-13-99	01-13-99	1	399		C	
48467	3	03-31-99	394	03-31-99	03-31-99	1	400	03-31-99	C	361.08
49016	3	07-07-99	394	07-07-99	07-07-99	1	399	07-07-99	C	362.29
49100	4	07-22-99	421	07-22-99	07-22-99	1	431	07-22-99	C	366.82
49160	3	08-16-99	421	08-16-99	08-16-99	1	416	08-16-99	C	354.06
49212	6	09-03-99	421	09-03-99	09-03-99	1	424	09-03-99	C	360.87
50497	5	07-01-99	1577	07-01-99	07-01-99	4	1575	07-01-99	C	1430.10
81487	3	08-12-99	392	08-13-99	08-13-99	1	420	08-18-99	C	357.46

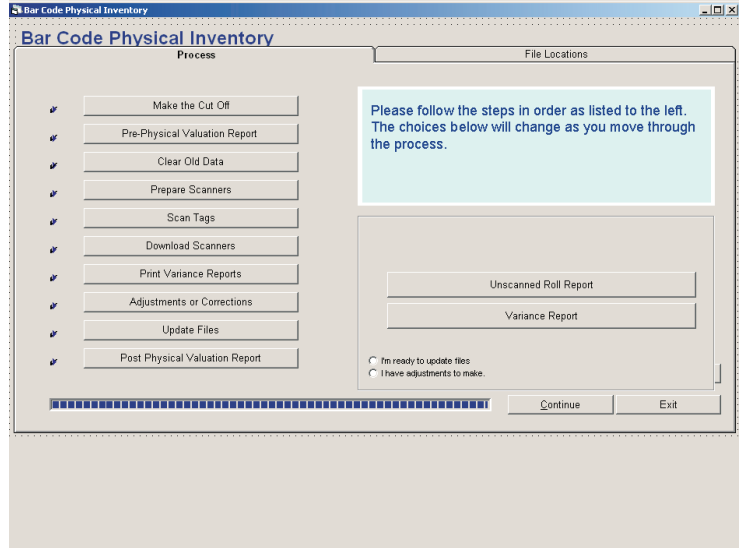
Total: 8775.97

Viewing 9/21/2001 1:37:49 PM 11/29/2001 10:09:01 AM MARY Record: 2515 CAPS NUM INS

Standard Reports

-  Complete Inventory Report
-  Inventory Value Reports
-  Below Reorder Point Report
-  Inventory Shortage Report
-  Requirements Analysis Report
-  Vendor Analysis Report
-  Vendor List
-  Purchase Orders
-  Purchase Order Listings
-  Past Due Purchase Orders
-  Un-Received PO Report
-  Un-Invoiced PO Report
-  Allocations by Job Report
-  Receipts by Date
-  Inventory by Tag Number Report
-  Tags Listings
-  Usage Reports
-  Kind File Listing
-  Bar Codes
-  Physical Inventory Comparison Reports
-  Daily Usage Audit Report
-  Inventory Tags with barcodes
-  Material Requisitions

Raw Material Inventory



Physical Inventory

Both manual and Bar Code Physical Inventory processes are included.

Purchase Order Control

Purchase Orders entered immediately update on-order quantity for each. When using RMI without EDI (Electronic Data Interchange), when items are received the manifest is posted, tags are printed and matched to the received items. Invoices are entered into the system and automatically update Accounts Payable. With Plantrol's RMI and EDI, the manifest is transmitted to you electronically and item tags are printed prior to the actual receipt of the shipment. Receiving is easily accomplished by scanning incoming mill labels with a laser scanner to obtain the tag number, which then updates your inventory system with all rolls received. No more tagging errors!

Reports and Inquiries

A complete selection of reports is provided for inventory analysis to assist in paper ordering, inventory valuation, identifying shortages and impending stock outs. The included inquiry builder allows you to create customized inquiries as needed.

2007-08-29 9:28:16 AM

Complete Inventory Report
Company Number 1

Page 10

Description	Average Price	On Hand Quantity	On Order Quantity	Reserved Quantity	Available Quantity	Re-order Point	Average Usage	M.T.D. Usage	Recommended Purchase with Lead Time of		
									1 Days	2 Days	3 Days
8-1/2 Pink 15.0 CF PREM	63.20	625	1080	653	1052	2	1843				
9-1/2 Pink 15.0 CF PREM	63.20	3079	2700	707	5072	2	8319				
9-7/8 Pink 15.0 CF PREM	63.20	358			358	2	755	185	210	235	
10-5/8 Pink 15.0 CF PREM	63.20	258			258	2	279	66	75	85	
11-5/8 Pink 15.0 CF PREM	63.21	3816	1480	25	5271	2	6852				
12-1/4 Pink 15.0 CF PREM	63.20	1581		324	1257	2	2564				
13-5/8 Pink 15.0 CF PREM	63.21	126	435		561	2	1495	218	268	317	
14-7/8 Pink 15.0 CF PREM	63.20	3402	940		4342	2	6621				
15-1/2 Pink 15.0 CF PREM	63.19	554			554	2	352				
17 Pink 15.0 CF PREM	63.20	677	540	188	1029	2	817				
17-1/2 Pink 15.0 CF PREM	63.21	45		761	-716		382	1097	1110	1122	
18 Pink 15.0 CF PREM	63.20	406		262	144		639	354	375	396	
18-1/4 Pink 15.0 CF PREM	63.20	578		256	322	2	1324	408	452	496	
19 Pink 15.0 CF PREM	63.19	6812		830	5982	2	15577				
19-3/4 Pink 15.0 CF PREM	63.14	1577		288	1289	2	790				
23-1/4 Pink 15.0 CF PREM	62.32	7627	3700	2778	8549	2	10478				
24-1/2 Pink 15.0 CF PREM	63.21	908			908	2	2984	222	321	421	
8-1/2 Blue 15.0 CF PREM	63.20	314		91	223	2	512	221	238	255	
9-1/2 Blue 15.0 CF PREM	63.20	576	1500	380	1696	2	1508				
9-7/8 Blue 15.0 CF PREM	63.20	248	315		563	2	87				
11-5/8 Blue 15.0 CF PREM	63.21	322			322	2	756	221	247	272	
12-1/4 Blue 15.0 CF PREM	63.21	55			55	2	501	383	400	417	
14-7/8 Blue 15.0 CF PREM	63.20	483			483	2	1131	189	226	264	
15-1/2 Blue 15.0 CF PREM	63.18	214			214	2	209	65	72	79	
17-1/2 Blue 15.0 CF PREM	63.21	1054			1054	17	207				
19 Blue 15.0 CF PREM	63.20	301	605		906	2	4336	480	625	770	
19-3/4 Blue 15.0 CF PREM	62.99	293			293	2	299	43	53	63	
23-1/4 Blue 15.0 CF PREM	63.20	784			784	2	272				
24-1/2 Blue 15.0 CF PREM	63.17	596			596	17	146				